



NY - GEO 2025
APRIL 23-24, 2025 | SARATOGA SPRINGS, NY



Establishing a Thermal Energy Network Program

Moderator: Tim Ashmore / *CDM Smith*

Panel: Jen Hendrick / *Baltimore Gas & Electric*

Greg Koumoullas / *Con Edison*

Bess Gorman / *National Grid*



Establishing a Thermal Energy Network Pilot Program

Introducing our Panelists



Greg Koumoullos
ConEdison

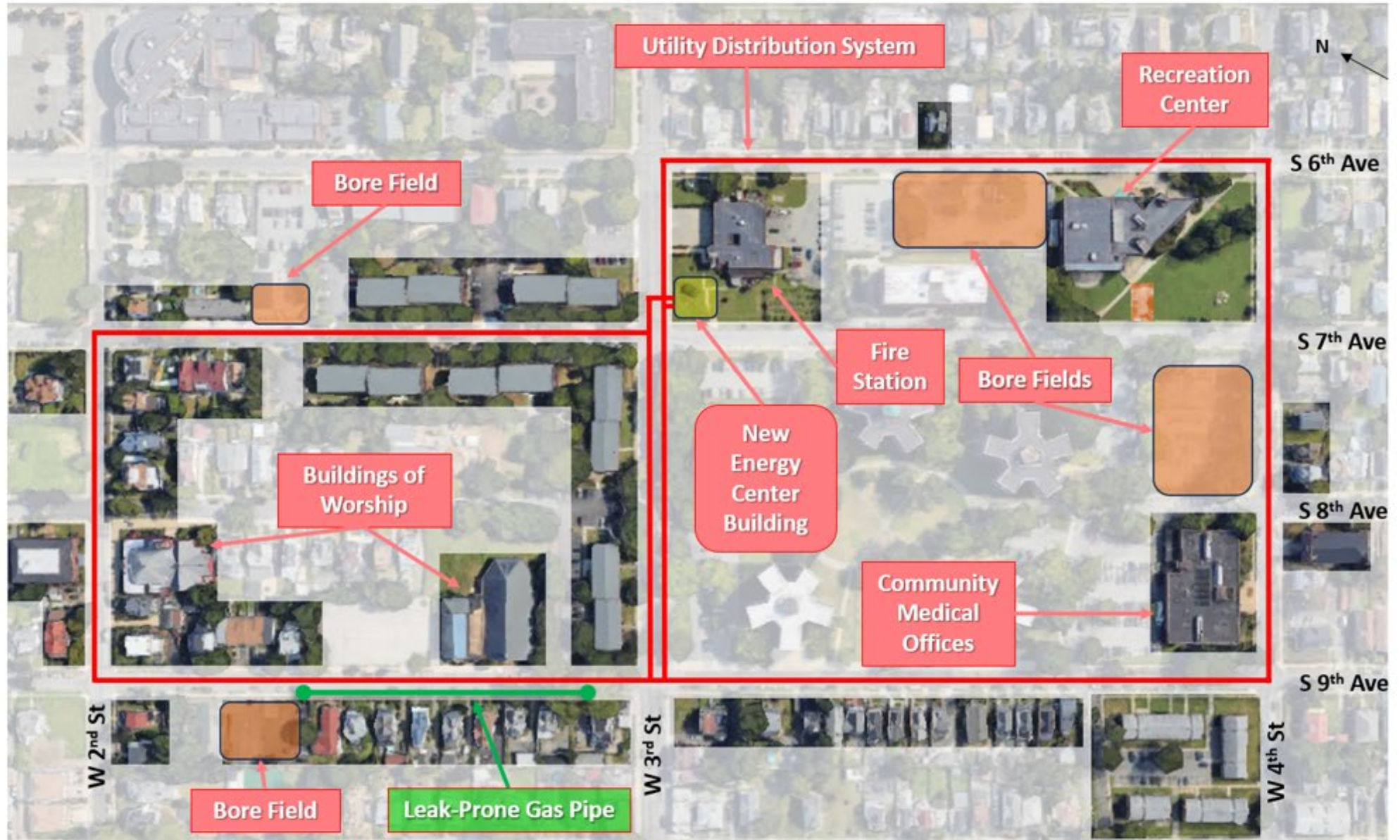


Bess Gorman
National Grid



Jen Henrick
Baltimore Gas &
Electric

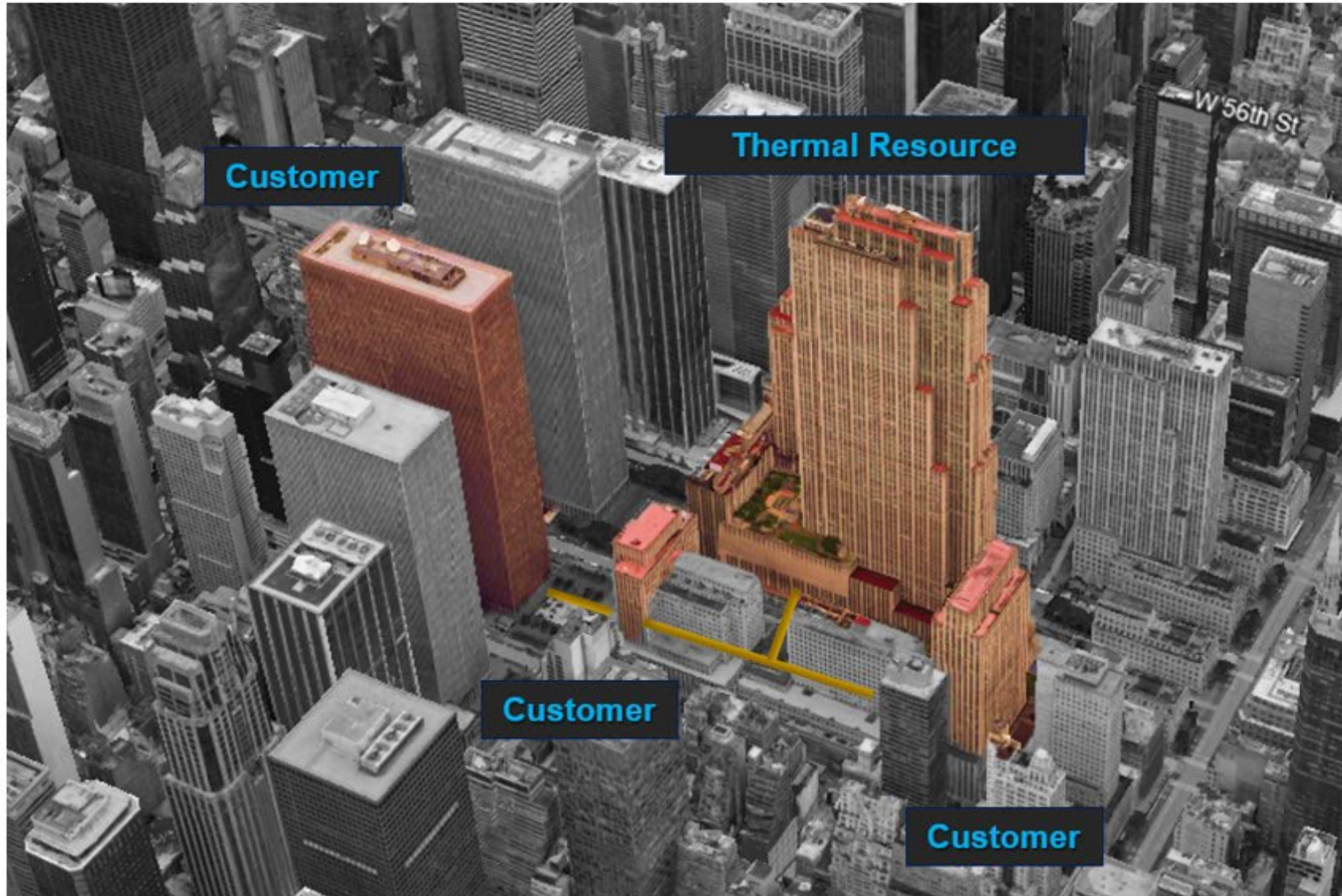
Mount Vernon Project



Chelsea Project



Rockefeller Center Project



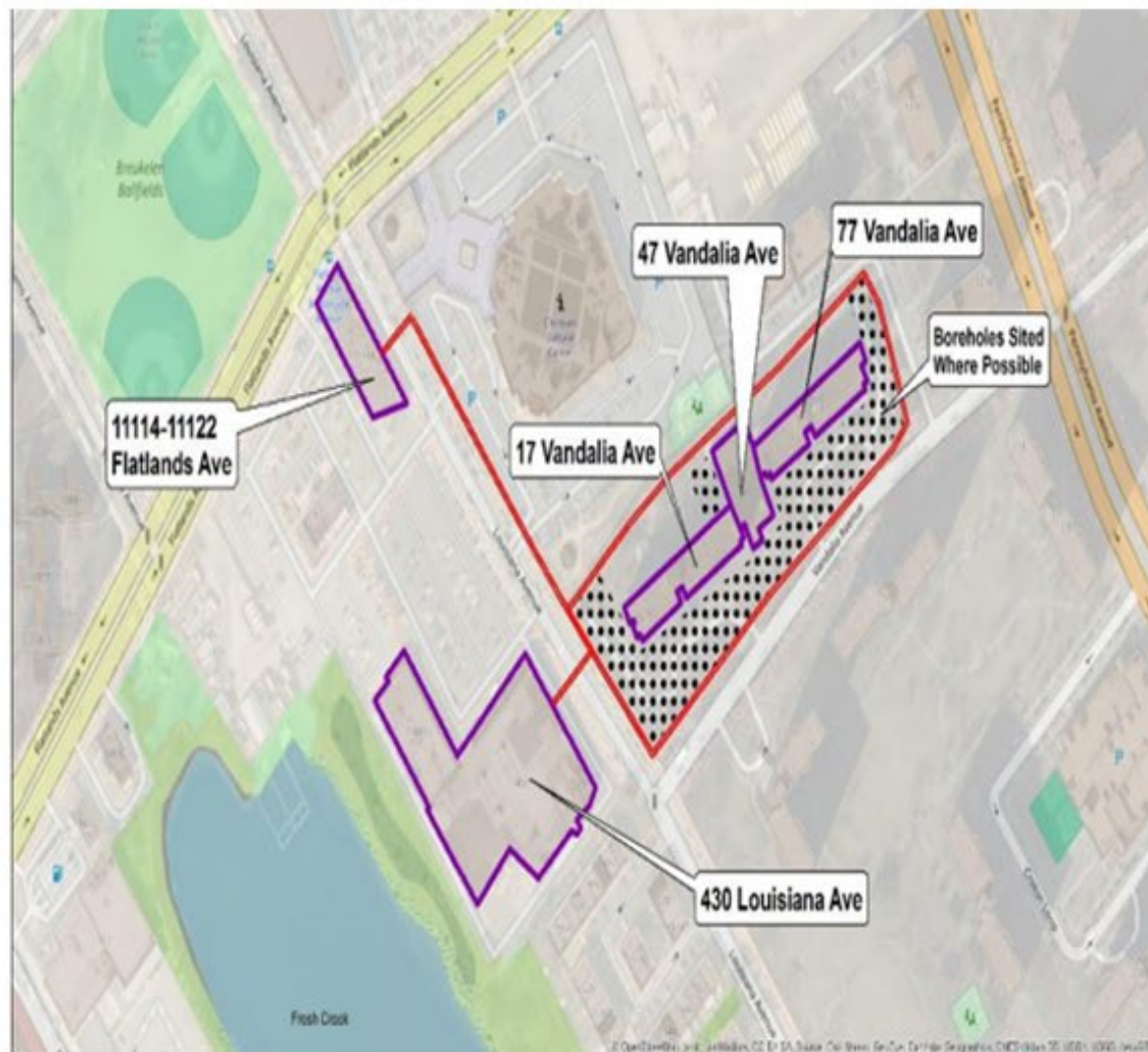
KEDNY Pilot Summary

KEDNY Brooklyn: New York City Housing Authority (NYCHA) and Nearby Commercial Retail Buildings in Disadvantaged Community currently served by natural gas

Total Connected Load: 556 tons, 256,000 sq. ft in NYCHA buildings and up to total of 334,000 sq. ft. with commercial customers

Special features: Use of SHARC system to reduce size of borefield

Potential for future expansion



Troy Pilot Summary

NMPC Troy: Mixed Use commercial and multi-family buildings in downtown Troy in a Disadvantaged Community currently served by natural gas

Total Connected Load: 550 tons, up to 350,000 sq. ft

Special feature: National Grid to construct, own, and operate the distribution loop and energy center. Troy Land Development Corp. to construct and own borefield providing thermal energy to customers on National Grid's distribution loop



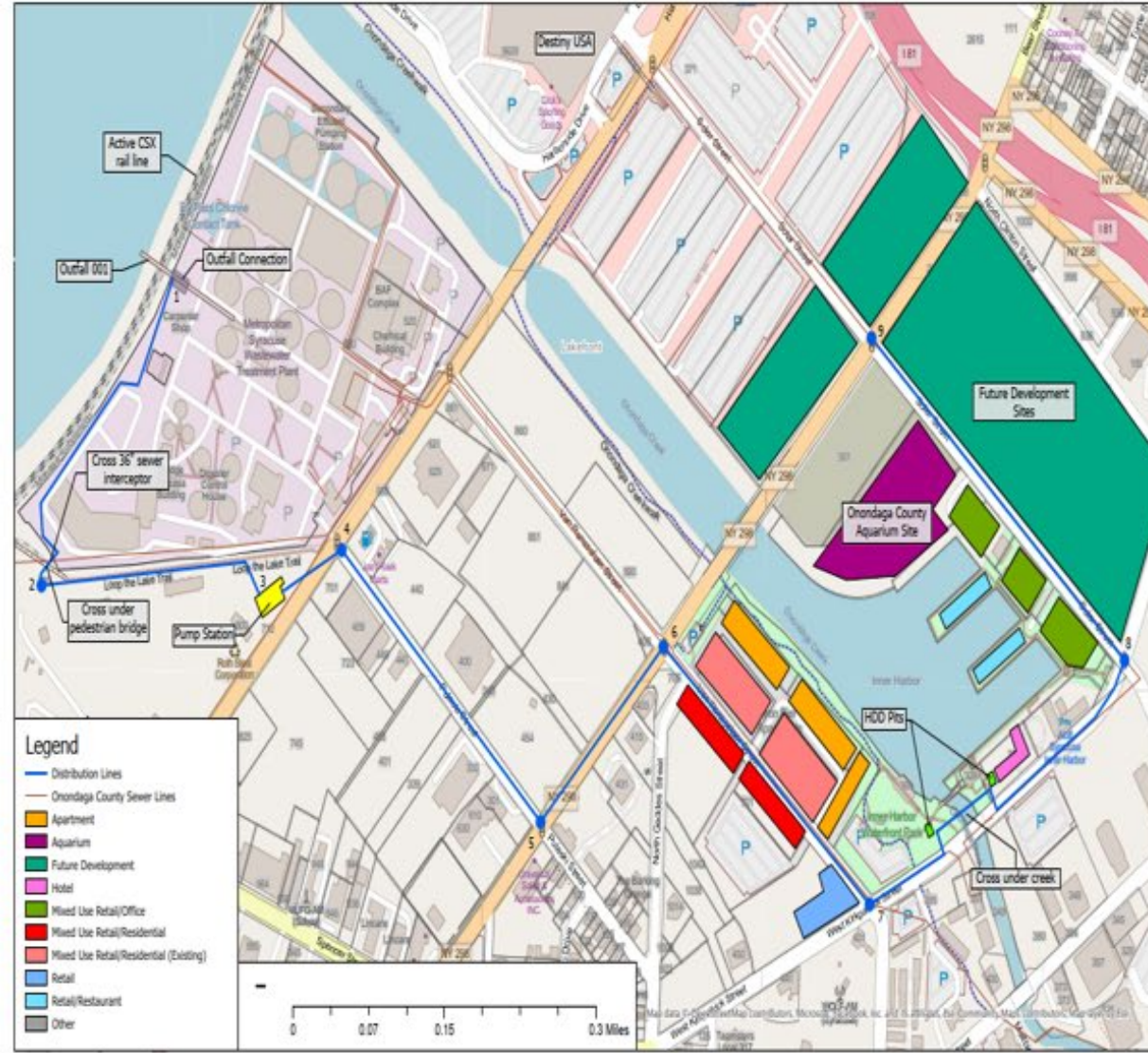
Syracuse Pilot Summary

NMPC Syracuse: Mixed Use commercial and multi-family buildings mostly new construction in the Inner Harbor

Total Connected Load: 2,000 tons, up to 1.6 million sq. ft to be served

Special feature: Use of thermal energy from the Onondaga County wastewater treatment plant

Extra capacity from thermal resource (WWTP) to connect additional buildings in future



Networked Geothermal Pilot Proposal

New Legislation paves the way for a new, clean heating solution for Marylanders



WARMTH Act - Requirements

- House Bill 0397 requires Gas Utilities to propose Networked Geothermal pilots
- Proposal due July 1, 2025, PSC decision by Dec 31, 2025
- Go-live 12 months after PSC approval, two years pilot period

WARMTH Act - Engaging the Community

- Customer's new electric appliances will be paid for by pilot. BGE will own appliances connected to thermal network, until tax credit expires.
- Community Benefit Agreement, focused on workforce & labor

WARMTH Act - Pilot Proposal Criteria

Requirements

- 80% of participating customers must be LMI households
- Site must be served by gas today
- Customer plans: Opt-out, complaint resolution, shut-off, etc.
- Rate structure, ensuring pilot customers do not pay more than baseline
- Energy usage measurement & accounting

Evaluation Criteria

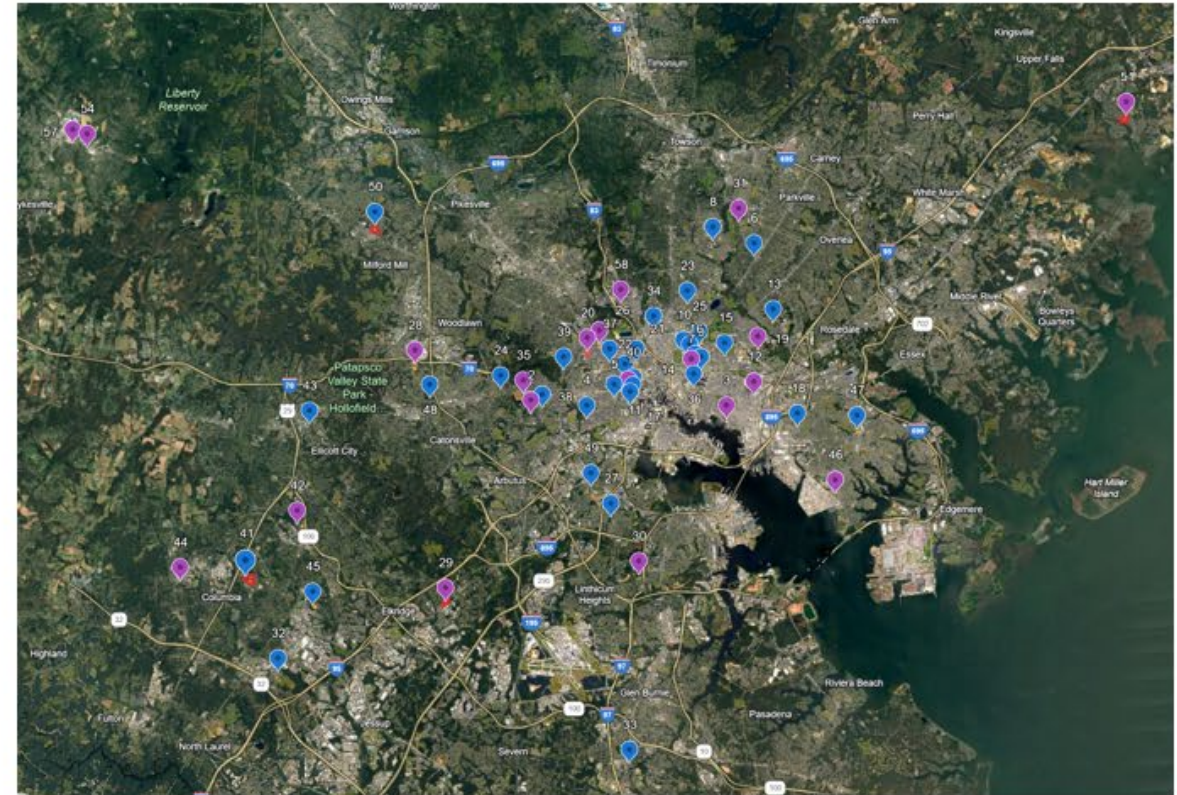
- Cost effectiveness, including avoided costs & societal cost
- Ability to acquire federal & state funding support
- Address: GHG reductions, EJ Communities, etc.

Pilot Site Selection Process



Site requirements:

- ✓ Technically viable
 - Suitable geology
- ✓ Existing gas service
 - Targeted sites with cast iron or steel
- ✓ Sufficient available electric capacity
- ✓ Real Estate and Environmental feasibility
- ✓ LMI community
- ✓ Strong anchor customer





Questions



NY - GEO 2025
APRIL 23-24, 2025 | SARATOGA SPRINGS, NY



Establishing a Thermal Energy Network Program

Moderator: Tim Ashmore / *CDM Smith*

Panel: Jen Hendrick / *Baltimore Gas & Electric*

Greg Koumoullos / *Con Edison*

Bess Gorman / *National Grid*